

DESCRIPTION

HC2017 has an optimum input voltage, step-down converter that operates in either CV (Constant Output Voltage) mode or CC (Constant Output Current) mode. The maximum input voltage is up to 36V and the operation input voltage from 8.5V to 32V.

MOSFET, what build in 50mΩ High-Side and 30mΩ Low-Side, could deliver up to 3.1A of continuous output current.

External compensation is not needed. The line compensation and the constant current can be set by an external resistance.

In conclusion, HC2017 is a full function and high performance, high reliability buck DC-DC converter.

FEATURES

- Build in High-Side and Low-Side MOSFET
- Max Output Current: 3.1A
- Constant Output Voltage: 5.10V
- Constant Voltage Accurate: $\pm 2\%$
- No External Compensation Needed
- Efficiency: Up to 92%
- Short Circuit Protection
- Over Voltage Protection
- Build-in DP/DM for BC1.2 DCP scheme
 - _BC1.2 DCP Mode
 - _2.7V/2.7V Mode
- Thermal shutdown Protection
- Under Voltage Lock-Out
- Available in SOP-8 package
- ESD HBM >5KV

APPLICATIONS

- Car DVD
- Black Box
- Car Charger
- Industry Application

TYPICAL APPLICATION

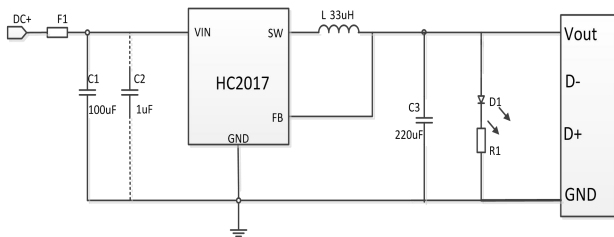


Figure1

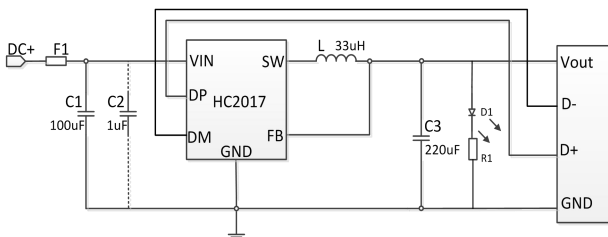
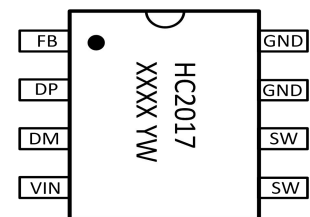


Figure2

Note: Figure1 Typical power circuit, without USB recognizer
Figure2 Typical power circuit, with USB recognizer circuit

PIN OUT & MARKING



SOP-8

HC2017: Product Code
TXXX: Lot No.
XX: Date code (Year & Week)